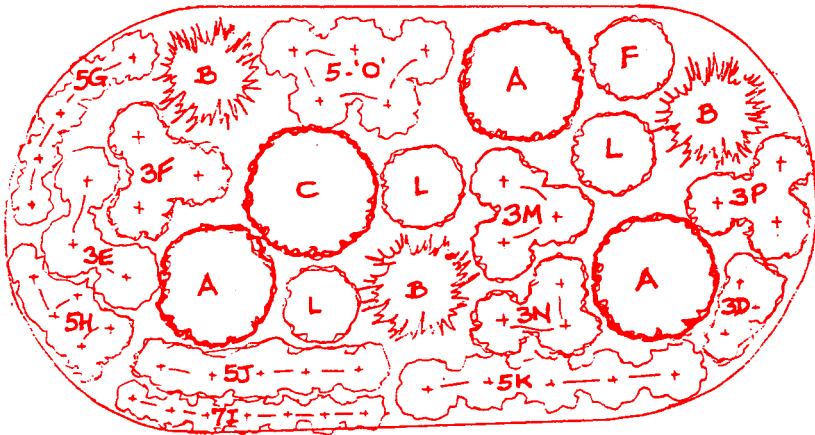


Sunny Perennial Border or Bed

FREE!
Please take one!

Approximately 3 m x 9 m



- A Peony (pink, red or white - May/June)
- B Daylily (pink, red, orange or yellow - July/August)
- C Variegated Miscanthus Ornamental Grass (green & white foliage)
- D Iris - Tall Bearded or Siberian (purple/white - June)
- E Cushion Spurge, *Euphorbia polychroma* (yellow - May/June)
- F *Sedum* 'Autumn Joy' (dark pink - September/October)
- G Blue Fescue Ornamental Grass (good all season)
- H Dragon's Blood Sedum (red foliage, red flowers - July)
- I *Artemisia* 'Silver Mound' (silver foliage all summer)
- J Spike Veronica (blue, pink or white - July/August)
- K Campanula Blue Chips (July/August)
- L Monarda (red, pink or purple - July/August)
- M Threadleaf Coreopsis (yellow - July to September)
- N Spike Veronica (blue, pink or white - July/August)
- O Black-eyed Susan, *Rudbeckia* (yellow - August to October)
- P Campanula White Clips (July/August)

More tips on the other side!

Sunny Perennial Border or Bed

This example of a perennial bed is unlikely to suit your exact needs. The size and shape may need to be changed to suit your particular garden site. You may also wish to change some of the plant choices and to select your own colour scheme. The design offered here is meant as a starting point and to illustrate some principals.

The first aim was to have plants in flower each month of the garden season, from May to October. And since most perennials only flower for a few weeks, it is important to choose plants with foliage that is attractive at other times.

Note, in the placement of many perennials, they form a triangle. Example, *Sedum* 'Autumn Joy' indicated with an (F) in the triangle group of three with an other single specimen elsewhere as an echo or repetition. The three Peonies (A) although spaced well apart still form a triangle as do the Daylilies (B). Use odd numbers; one, three, five, seven when planting.

The various heights and shapes are important. The upright arching form of the ornamental grass (C); the round shape of the Peony and the grassy strap-like foliage of the Daylily are all chosen to incorporate contrasting forms. The spike Veronicas (J) and (N) give us pointed spires or steeples.

One more gardening tip: Always use some white flowers. They add a sparkle to the planting and are particularly noticeable in the evenings and on dull days.

HAPPY GARDENING!



Landscape Ontario Horticultural Trades Association represents the leading garden centres in Ontario. As one of the select garden centres which has achieved "Approved Member" status, we assure our customers receive a high level of service, a good range of quality plants and associated products, together with professional advice and information.

Landscape Ontario 7856 Fifth Line S, RR 4, Milton, ON L9T 2X8 (905) 875-1805
1-800-265-5656 e-mail: lo@hort-trades.com website: www.landscapeontario.com

LOOK FOR THIS SYMBOL WHEN SHOPPING FOR YOUR GARDENING NEEDS