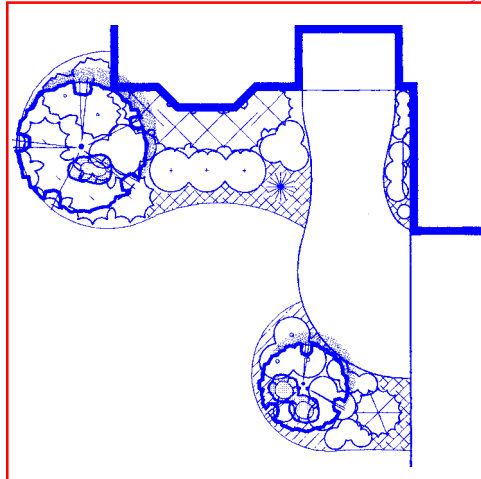
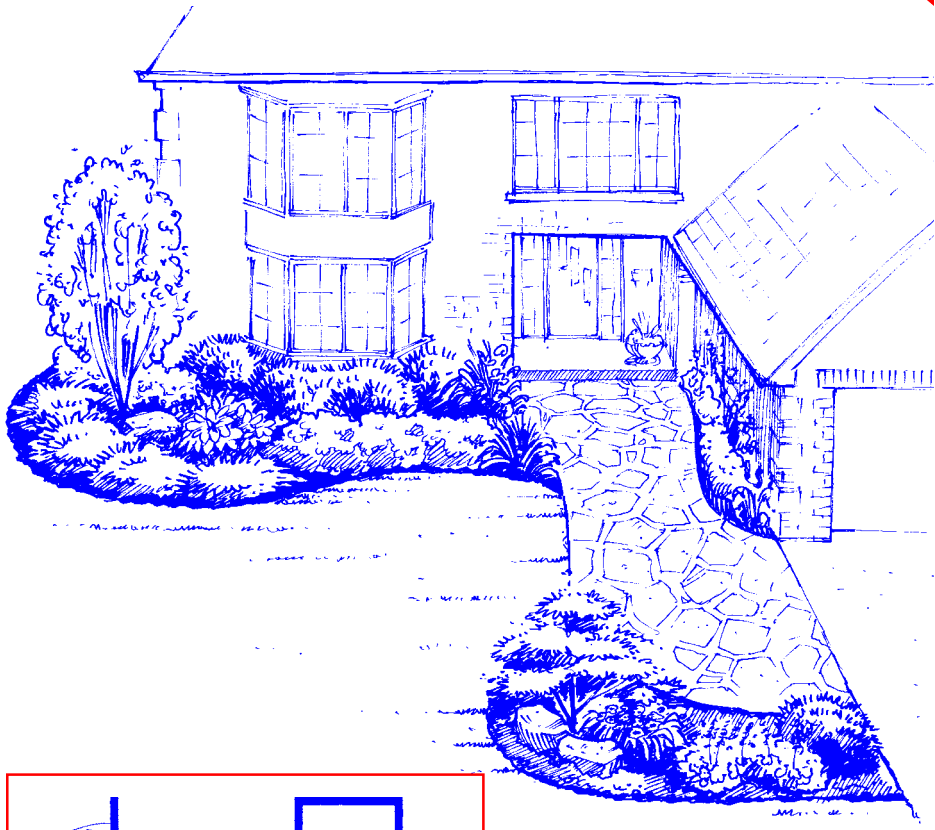
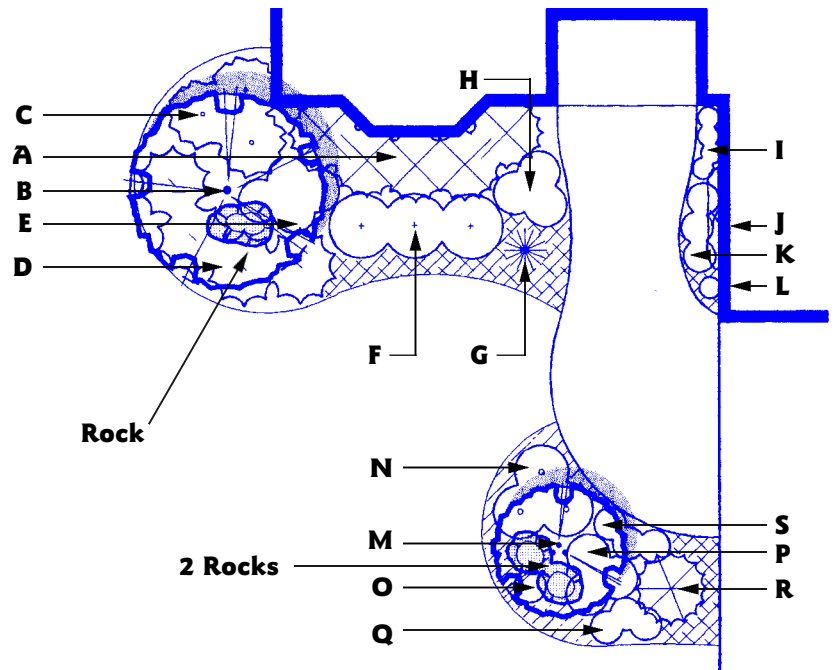


# Front Yard Landscape Design

**FREE!**  
Please take one!



**SEE REVERSE SIDE  
FOR PLANTING PLAN  
AND PLANT LIST**



**PLANT LIST**

- |                                  |    |                        |
|----------------------------------|----|------------------------|
| <b>A</b> Dense Yew               | or | Globe Cedar            |
| <b>B</b> Ivory Silk Lilac        | or | Pyramidal English Oak  |
| <b>C</b> Dwarf Burning Bush      | or | Variegated Weigela     |
| <b>D</b> Prince of Wales Juniper | or | Calgary Carpet Juniper |
| <b>E</b> Hosta                   | or | Astilbe                |
| <b>F</b> Goldmound Spirea        | or | Hydrangea              |
| <b>G</b> Blue Oat Grass          | or | Dwarf Fountain Grass   |
| <b>H</b> Daylily                 | or | Autumn Joy Sedum       |
| <b>I</b> Primrose                | or | Coral Bells            |
| <b>J</b> Clematis                | or | Climbing Hydrangea     |
| <b>K</b> Bergenia                | or | Candytuft              |
| <b>L</b> Bearded Iris            | or | Liatris                |
| <b>M</b> Japanese Maple          | or | Serviceberry Clump     |
| <b>N</b> Hydrangea               | or | Potentilla             |
| <b>O</b> Iris                    | or | Statice                |
| <b>P</b> Shasta Daisy            | or | Black-eyed Susan       |
| <b>Q</b> Coral Bells             | or | Blue Campanula         |
| <b>R</b> Globe Blue Spruce       | or | Nest Spruce            |
| <b>S</b> Dianthus                | or | Creeping Phlox         |

**Use seasonal flowers throughout for added colour.**



Landscape Ontario 7856 Fifth Line S, RR 4, Milton, ON L9T 2X8  
(905) 875-1805 1-800-265-5656  
e-mail: lo@hort-trades.com website: www.landscapeontario.com

**LOOK FOR THIS SYMBOL WHEN SHOPPING FOR YOUR GARDENING NEEDS**